



*their safety is essential.*

Products made to work hard—and built to last.

## Rigid-Lock QuickBerm® Spill Containment Berms

Innovative, cost-effective spill control for drums, IBCs, vehicles, tankers, and more

### Convenient & Efficient

- Single piece construction deploys quickly—no assembly needed
- Sidewalls lower easily for convenient access
- Unobstructed workspace inside berm reduces tripping hazards
- Flexible design folds for easy shipping, portability, and storage

### Reliable Protection

- 100% leakproof protection
- Reinforced CriticalCorner™ design prevents seam leaks
- Complies with EPA for containment and spill prevention (SPCC)—protect the environment while avoiding costly fines and hazardous clean-up costs
- Reduces slip and fall accidents

### Superior Design & Performance

- Patented, built-in stainless-steel wall supports lock into place and do not sag
- High-strength nylon support hub includes anchor holes to withstand winds up to 40 MPH (anchors not included)
- In down position, supports withstand vehicle weights up to 11,000 lb (5,000 kg) per tire
- Fray-resistant top hem adds strength and integrity
- EnGuard™ PVC coated fabric provides UV and chemical resistance
- Rigid-Lock QuickBerm All-in-One models include integral track runners on top and bottom of berm for added protection



Rigid-Lock QuickBerm



Rigid-Lock QuickBerm All-in-One

	Rigid-Lock QuickBerm® Lite	Rigid-Lock QuickBerm®	Rigid-Lock QuickBerm® All-in-One
Material	EnGuard™ I PVC coated fabric	EnGuard™ V modified PVC coated fabric	EnGuard™ V modified PVC coated fabric with welded-in track runners
Abrasion resistance	Good	Better	Best
Chemical resistance	Good	Better	Better
Puncture resistance	Good	Better	Best
Wall height	8 inches	12 inches	12 inches
Vehicle traffic	None	Medium to low frequency	High frequency
Usage	Short term / emergency	Long term	Long term / rental
Color	Yellow	Black	Black and yellow
Warranty	1-year limited	5-year limited	5-year limited



Rigid-Lock QuickBerm



Rigid-Lock QuickBerm Lite



### Rigid-Lock QuickBerm® Models

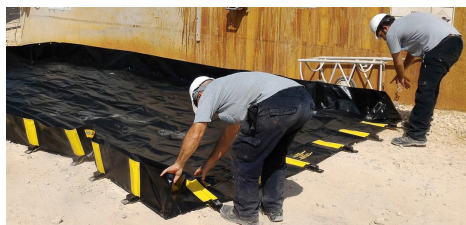
Capacity (gallons/liters)	Nominal Inside Dimensions (W x D x H)	Model	CA Prop 65
<b>Rigid-Lock QuickBerm® Lite</b> - for emergency and low frequency use applications			
79/299	4 ft x 4 ft x 8 in (1.2 m x 1.2 m x 203 mm)	28370	▲*
119/451	4 ft x 6 ft x 8 in (1.2 m x 1.8 m x 203 mm)	28372	▲*
159/602	4 ft x 8 ft x 8 in (1.2 m x 2.4 m x 203 mm)	28374	▲*
318/1204	8 ft x 8 ft x 8 in (2.4 m x 2.4 m x 203 mm)	28376	▲*
398/1507	8 ft x 10 ft x 8 in (2.4 m x 3.0 m x 203 mm)	28378	▲*
<b>Rigid-Lock QuickBerm®</b> - for pedestrian and low frequency drive-in / drive-out applications			
175/662	4 ft x 6 ft x 12 in (1.2 m x 1.8 m x 305 mm)	28512	▲**
235/890	4 ft x 8 ft x 12 in (1.2 m x 2.4 m x 305 mm)	28514	▲**
355/1344	6 ft x 8 ft x 12 in (1.8 m x 2.4 m x 305 mm)	28516	▲**
475/1798	8 ft x 8 ft x 12 in (2.4 m x 2.4 m x 305 mm)	28518	▲**
745/2820	10 ft x 10 ft x 12 in (3.0 m x 3.0 m x 305 mm)	28519	▲**
1075/4069	12 ft x 12 ft x 12 in (3.7 m x 3.7 m x 305 mm)	28522	▲**
1435/5432	12 ft x 16 ft x 12 in (3.7 m x 4.9 m x 305 mm)	28524	▲**
1795/6795	12 ft x 20 ft x 12 in (3.7 m x 6.1 m x 305 mm)	28526	▲**
1910/7230	16 ft x 16 ft x 12 in (4.9 m x 4.9 m x 305 mm)	28528	▲**
2390/9047	16 ft x 20 ft x 12 in (4.9 m x 6.1 m x 305 mm)	28530	▲**
2510/9501	12 ft x 28 ft x 12 in (3.7 m x 8.5 m x 305 mm)	28525	▲**
2990/11318	20 ft x 20 ft x 12 in (6.1 m x 6.1 m x 305 mm)	28532	▲**
4485/16978	12 ft x 50 ft x 12 in (3.7 m x 15.2 m x 305 mm)	28527	▲**
4840/18321	12 ft x 54 ft x 12 in (3.7 m x 16.5 m x 305 mm)	28529	▲**
5860/22183	14 ft x 56 ft x 12 in (4.3 m x 17.1 m x 305 mm)	28531	▲**
<b>Rigid-Lock QuickBerm® All-in-One</b> - for higher frequency vehicle applications			
595/2252	8 ft x 10 ft x 12 in (2.4 m x 3.0 m x 305 mm)	28521A	▲†
1120/4240	10 ft x 15 ft x 12 in (3.0 m x 4.6 m x 305 mm)	28523A	▲†
2510/9501	12 ft x 28 ft x 12 in (3.7 m x 8.5 m x 305 mm)	28525A	▲†
4485/16978	12 ft x 50 ft x 12 in (3.7 m x 15.2 m x 305 mm)	28527A	▲†
4840/18321	12 ft x 54 ft x 12 in (3.7 m x 16.5 m x 305 mm)	28529A	▲†
5860/22183	14 ft x 56 ft x 12 in (4.3 m x 17.1 m x 305 mm)	28531A	▲†

Note (1): For exterior dimension, add 8-in (203-mm) to width and length to account for support and hub.

Note (2): When selecting a berm size, allow 12-in (305-mm) at entry or exit for lowering and raising the wall on Rigid-Lock QuickBerm and Rigid-Lock QuickBerm All-in-One models.

Note (3): When selecting a berm size, allow 8-in (203-mm) at entry or exit for lowering and raising the wall on Rigid-Lock QuickBerm Lite models.

### Quick-deploy design for permanent or temporary spill control



No assembly needed— saves time, ready in minutes!



A simple tug locks supports in upright position.



Rigid-Lock QuickBerm Lite



Rigid-Lock QuickBerm



Rigid-Lock QuickBerm All-in-One

▲\* WARNING: This product can expose you to chemicals including diisononyl phthalate and lead, which are known to the State of California to cause cancer and birth defects or other reproductive harm. For more information go to [www.P65Warnings.ca.gov](http://www.P65Warnings.ca.gov).

▲\*\* WARNING: This product can expose you to chemicals including lead, which is known to the State of California to cause cancer and birth defects or other reproductive harm, and nickel, which is known to the state of California to cause cancer. For more information go to [www.P65Warnings.ca.gov](http://www.P65Warnings.ca.gov).

▲† WARNING: This product can expose you to chemicals including lead and diisononyl phthalate, which are known to the State of California to cause cancer and birth defects or other reproductive harm, and nickel, which is known to the state of California to cause cancer. For more information go to [www.P65Warnings.ca.gov](http://www.P65Warnings.ca.gov).